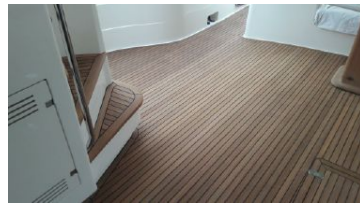


78 ft 2008 Ferretti Yachts 780

€1,795,000 Tax: Paid, Italy

Sicily, Italy



Boat Details

Make:	Ferretti Yachts	Class:	Flybridge	Heads:	4
Model:	780	Hull Material:	Fiberglass	Fuel Type:	Diesel
Year:	2008	Beam:	19 ft 5 in		
Length:	78 ft 9 in	Boat Location:	Sicily, Italy		
Price:	€1,795,000	Cabins:	4		
Condition:	Used	Berths:	8		

Description

This beautiful Yacht has now become available for Sale at a fantastic price !! Bring Offers !!

Information & Features

2008 MTU 12V 2000 M92 (Engine 1)

Type: **Inboard**

Power: **1660 hp**

2008 MTU 12V 2000 M92 (Engine 2)

Type: **Inboard**

Fuel Type: **Diesel**

Power: **1660 hp**

Dimensions

LOA: **78 ft 9 in**

LWL: **66 ft 6 in**

Beam: **19 ft 5 in**

Weights

Dry Weight: **63,199 kg**

Tanks

Fuel: **5,900 l**

Fresh Water: **1,320 l**

Accommodations

Double Berths: **2**

Heads: **4**

Twin Berths: **2**

Cabins: **4**

Other

Warranty: **None**

Hull Shape: **Deep Vee**

Builder: **Ferretti Yachts**

Manufacturer Provided Description

At a length of 24 meters the Ferretti 780 is characterized by a completely innovative layout considering its internal details that guarantee ample space. It also presents refined finishes in teak wood compared to the traditional cherry wood that is normally adopted for a yacht of such dimensions. The design decision to integrate the access ladder to the flybridge within the wall structure of the yacht offers a continual visual solution from the rear deck facing the bow- thus enlarging the space dedicated to the conversation area featuring double sofas of contemporary design. Light colored finishes highlight the spirit of the boat, while large window structures allow to live in close contact with the sea, rendering the master cabin and the bathroom area an environment of great elegance to enjoy in full contact with the sea. Thanks to the introduction of the rear garage covered in teak the 780 offers many opportunities to take advantage of the open space, facilitating an easy descent into the sea.

Description Layout

Accommodation for up to 8 guests in 4 cabins (2 doubles and 2 twin, one with pullman berth). Each cabin is ensuite. The main cabin has a sofa, an area with a walk in wardrobe. There are 2 crew cabins for up to 4 crew. The saloon is very spacious and overlooks the dining area. The galley can be closed off from the living areas with a side door. A lot of exterior area that enables guests to have their own spaces on the yacht. Includes also a tender garage.

Electronic Equipment

- Chart plotter Geonav Multi Colour 15" with GPS
- Chart plotter Geonav 11" Sunshine display for fly helm
- Radar Furuno FR1934 Navnet with open array antenna 4kW
- Auto pilot Raytheon ST7002 at main helm
- Auto pilot Raytheon ST6002 at fly helm
- Tridata Raytheon ST60 at main and fly helm
- 3 CCTV cameras with monitor at helm including in engine room
- VHF/DSC radio at main and fly helm
- Touch screen control for boat systems
- Electronic engine controls
- Control station in cockpit
- Electrically operated helm seat
- Digital chain counter

Equipment

- Bow and Stern Thruster
- Compass
- 3rd Station at stern
- Air conditioning throughout
- Gyro - Zero speed stabilizers ARG (anti rolling)
- Bow and stern thrusters
- Generators (2 x 20kW)
(hours: 1785 and 1927)
- Hydraulic crane on flybridge (400kg capacity)
- Anchor windlass
- Mooring winches x 2
- Hydraulic gangway
- Hydraulic swim ladder
- Electric side door to deck
- Underwater Lights
- Cockpit table
- Teak deck, side walkway and cockpit floor
- Shower at transom
- Water maker Idromar 300ltr/hr
- Shore fresh water intake
- Water cleaner, 3 positions high pressure system
- Tender Avon
- Covers for flybridge and all other exterior furniture

Entertainment

- TV 43" LCD in saloon with electric raising
- TV 26" LCD in the master cabin
- TV 15" LCD in guest and crew cabins
- Stereo in dinette with speakers and remote control in cockpit
- Stereo in galley with speakers
- Bose 3.2.1. system in main cabin
- DVD player in all other guest and crew cabins
- Satellite TV system

Other Equipment

- Miele Washing machine/Dryer
- Miele Dishwasher
- Miele microwave oven
- Miele oven
- Vitro ceramic cooking top (4 rings)
- GE fridge/freezer with water and ice dispenser
- Inverter
- Battery Chargers x 2

Disclaimer

The Company offers the details of this vessel in good faith but cannot guarantee or warrant the accuracy of this information nor warrant the condition of the vessel. A buyer should instruct his agents, or his surveyors, to investigate such details as the buyer desires validated. This vessel is offered subject to prior sale, price change, or withdrawal without notice.





